



Interchangeable Truck Body System

HOIST SYSTEM



Switch-N-Go.com • 888 311-0867



Features

- Ideal for chassis cab vehicles with a GVWR of 13,000-33,000lbs
- Compatible with vehicles ranging from 60" CA to 138" CA
- Quickly and safely change bodies in *under three minutes*
- Easy interior cab controls for tight city & urban spaces
- Extremely rugged and powerful light weight system
- Electric and full hydraulic models available
- Variety of dump capacities up to 12.5 tons
- Hoist Lifts up to 50° dump angle

Distributor Info:



TO FIND A DISTRIBUTOR IN YOUR AREA



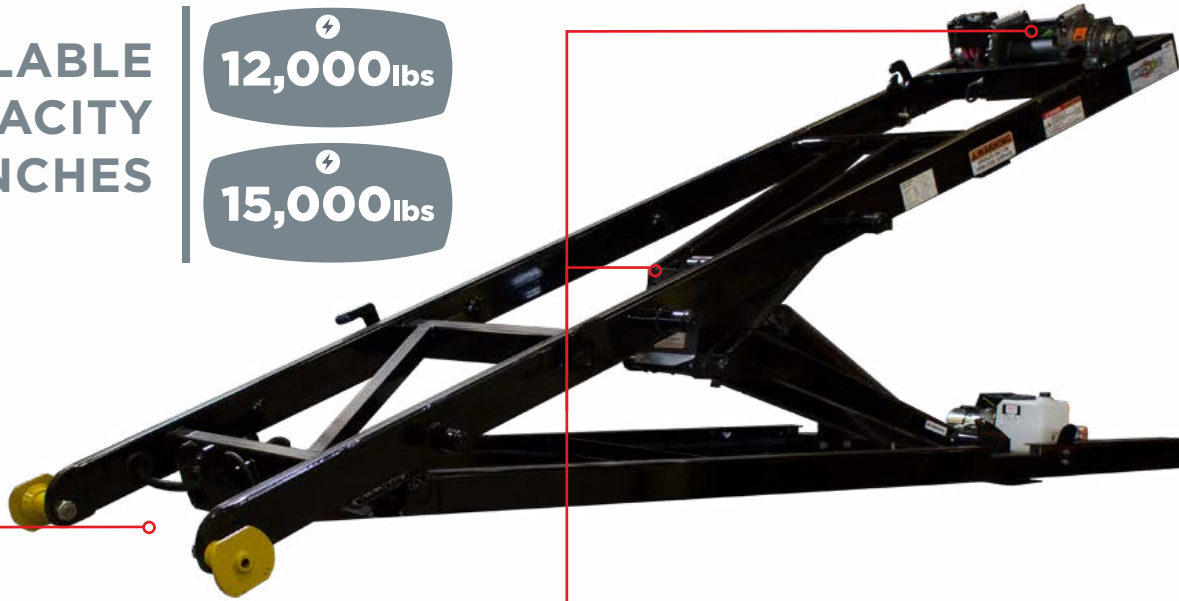
ELECTRIC



AVAILABLE
CAPACITY
WINCHES

12,000lbs

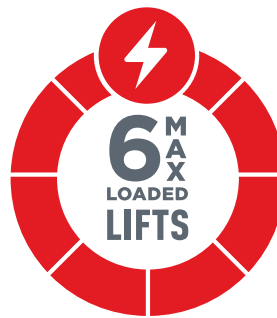
15,000lbs



ORIGINAL MODEL
THE 18" BODY OVERHANG
RETAINS A GREATER DUMPING
CAPACITY WITH A VARIETY OF
WINCH CAPACITIES



S-MODEL
THE 6" BODY OVERHANG IS
FOR EASIER HITCH ACCESS
& GREATER VERSATILITY IN
TOWING



ELECTRIC SYSTEM
FULLY CAPABLE ELECTRIC
OVER HYDRAULIC SYSTEM,
ECONOMICALLY MADE FOR
LIGHT TO MEDIUM DUTY



MEDIUM DUTY WORKLOAD
IDEAL FOR CLASS 3-7 TRUCKS
PERFECT FOR VEHICLES WITH
GVWR OF 15,000-26,000lbs



SYSTEM REQUIREMENTS

Requires installation of heavy duty alternator (150 AMP minimum)
Requires installation of minimum two deep cycle 750 CCA batteries

Requires installation of 600 AMP Fuse (included)
Requires electric installation kit components (included)



HYDRAULIC



 15,000lbs

 18,000lbs

AVAILABLE
CAPACITY
WINCHES



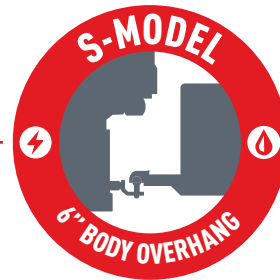
HYDRAULIC SYSTEM
MAXIMIZING LIFT EFFICIENCY
FROM THE TRUCK PTO OR CLUTCH
TO THE FULL HYDRAULIC SYSTEM
FOR UNLIMITED POWER ALL DAY



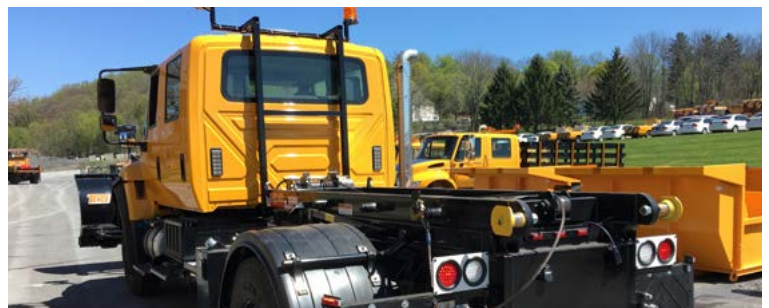
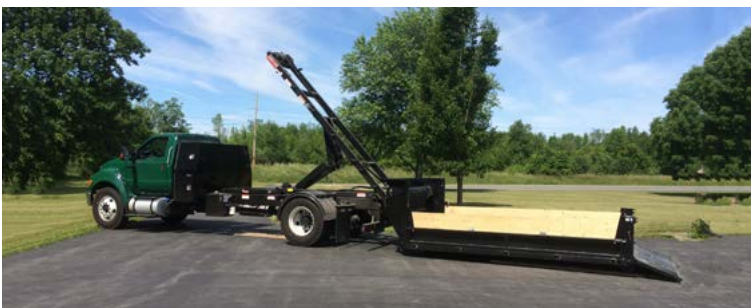
ORIGINAL MODEL
THE 18" BODY OVERHANG
RETAINS A GREATER DUMPING
CAPACITY WITH A VARIETY OF
WINCH CAPACITIES



HEAVY DUTY WORKLOAD
IDEAL FOR CLASS 5-7 TRUCKS
PERFECT FOR VEHICLES WITH
GVWR OF 19,000-33,000lbs



S-MODEL
THE 6" BODY OVERHANG IS
FOR EASIER HITCH ACCESS
& GREATER VERSATILITY IN
TOWING

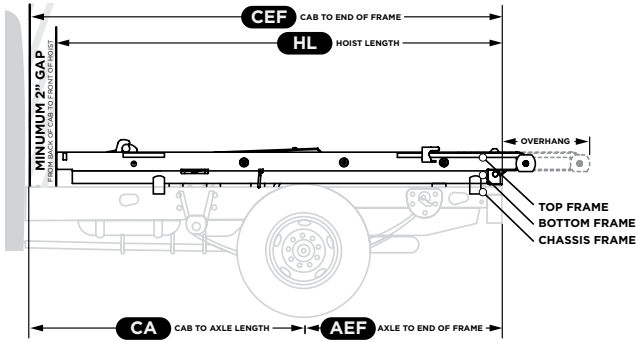


SYSTEM REQUIREMENTS

Requires either underhood clutch pump or "live drive" style PTO
Requires a hydraulic pump providing 3000 psi @ 12-15 GPM
Requires minimum hose size (1/2" D for pressure line | 3/4" D for return line)

Requires hydraulic installation kit components (included)
Requires 15-25A Fuse or Breaker (not-included)

CHASSIS CHART



ORIGINAL ELECTRIC

Standard Model - 18" hoist overhang

Model Name	Winch Loading Capacity (WLC) (lbs)	Dumping Capacity (DC) (tons)	Cab to End of Frame Length (CEF) (in.)	Cab to Axle Length (CA) (in.)	Gross Vehicle Weight Rating (GVWR) (lbs)
9-516-15E-PW	15,000	11.6	108" (9')	72"	19,000-26,000
10-516-12E-PW	12,000	10.0	120" (10')	84"	15,000-19,000
10-516-15E-PW	15,000	10.0	120" (10')	84"	19,000-26,000
11-520-12E-PW	12,000	10.6	132" (11')	84"-96"	15,000-19,000
11-520-15E-PW	15,000	10.6	132" (11')	84"-96"	19,000-26,000
11-620-15E-PW	15,000	11.7	132" (11')	84"-96"	19,000-26,000
12-620-12E-PW	12,000	10.7	144" (12')	96"-108"	19,000-26,000
12-620-15E-PW	15,000	10.7	144" (12')	96"-108"	19,000-26,000
13-620-15E-PW	15,000	9.6	156" (13')	108"-120"	19,000-26,000
14-620-15E-PW	15,000	8.6	168" (14')	120"-138"	19,000-26,000
14-620HD-15E-PW	15,000	10.0	168" (14')	120"-138"	19,000-26,000

SPECIFICATIONS

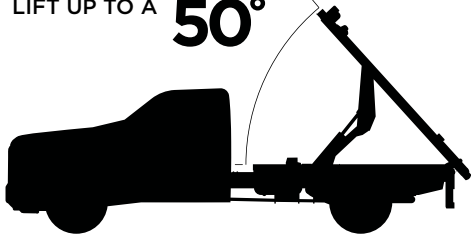
HOIST COMPONENTS

- 1/4" THICK WEAR BARS
- REAR BODY HOLD DOWNS
- POSITIVE FRONT BODY LOCKS & KEEPER
- 6-POLE ROUND RECEPTACLE
- BODY PROP ROD¹
- RUGBY SCISSOR HOIST
- INDUSTRIAL GRADE WINCH
- WINCH STOP SWITCH

DUMPING ANGLE

ALL MODELS HOIST SYSTEMS
LIFT UP TO A

50°



¹Only the HR-620 hoist body prop rod ships separately & must be installed onto truck chassis

S-MODEL ELECTRIC

S-Model - 6" hoist overhang

Model Name	(WLC)	(DC)	(CEF)	(CA)	(GVWR)
9S-516-12E-PW	12,000	9.5	108" (9')	60"	15,000-19,000
9S-516-15E-PW	15,000	9.5	108" (9')	60"	19,000-26,000
10S-516-12E-PW	12,000	9.0	120" (10')	84"	15,000-19,000
10S-516-15E-PW	15,000	9.0	120" (10')	84"	19,000-26,000
11S-520-12E-PW	12,000	9.0	132" (11')	84"	15,000-19,000
11S-520-15E-PW	15,000	9.0	132" (11')	84"	19,000-26,000
12S-620-15E-PW	15,000	9.0	144" (12')	96"-108"	19,000-26,000
13S-620-15E-PW	15,000	9.0	156" (13')	108"-120"	19,000-26,000
14S-620-15E-PW	15,000	8.0	168" (14')	120"-138"	19,000-26,000

ORIGINAL HYDRAULIC

S-Model - 6" hoist overhang

Model Name	(WLC)	(DC)	(CEF)	(CA)	(GVWR)
9-516-15H	15,000	11.6	108" (9')	72"	19,000-26,000
10-516-15H	15,000	10.0	120" (10')	84"	19,000-26,000
11-520-15H	15,000	10.6	132" (11')	84"	19,000-26,000
11-620-15H	15,000	11.7	132" (11')	84"	19,000-26,000
11-620HD-18H	18,000	12.5	132" (11')	84"	19,000-26,000
12-620-15H	15,000	10.7	144" (12')	96"-108"	19,000-26,000
12-620-18H	18,000	10.7	144" (12')	96"-108"	19,000-26,000
13-620-15H	15,000	9.6	156" (13')	108"-120"	19,000-26,000
13-620HD-18H	18,000	9.6	156" (13')	108"-120"	19,000-26,000
14-620HD-15H	15,000	11.0	168" (14')	120"-138"	19,000-26,000
14-620HD-18H	18,000	11.0	168" (14')	120"-138"	23,000-33,000

S-MODEL HYDRAULIC

S-Model - 6" hoist overhang

Model Name	(WLC)	(DC)	(CEF)	(CA)	(GVWR)
9S-516-15H	15,000	9.5	108" (9')	60"	19,000-26,000
10S-516-15H	15,000	9.0	120" (10')	84"	19,000-26,000
11S-520-15H	15,000	9.0	132" (11')	84"	19,000-26,000
11S-620-15H	15,000	10.0	132" (11')	84"	19,000-26,000
11S-620HD-18H	18,000	10.7	132" (11')	84"	19,000-26,000
12S-620HD-15H	15,000	10.7	144" (12')	96"-108"	19,000-26,000
12S-620HD-18H	18,000	10.7	144" (12')	96"-108"	19,000-26,000
13S-620HD-15H	15,000	9.6	156" (13')	108"-120"	19,000-26,000
13S-620HD-18H	18,000	9.6	156" (13')	108"-120"	19,000-26,000
14S-620HD-15H	15,000	9.0	168" (14')	120"-138"	19,000-26,000
14S-620HD-18H	18,000	9.0	168" (14')	120"-138"	19,000-26,000
14S-620HD-18H	18,000	9.0	168" (14')	120"-138"	19,000-26,000

